



Designed  
To Serve

# STRATA

BUFFETWARE



# Strata Buffetware

Launch Your Banqueting Into the Strata-sphere



Chafing Kits With Clamshell Inserts .....	3
Griddle Kits .....	5
Sauté Kits for Butane Heat .....	7
Sauté Kits for Canned Fuel .....	9
Warming Kits .....	11
Carving Station .....	13
Chilling Kits .....	15
Beverage Service .....	17
Care and Maintenance .....	18
Transport Cart .....	19





# Welcome to the Strata-sphere

Only in the Strata-sphere can you heat, chill, sauté, carve and more with an upmarket, well-priced modular system that grows with your needs whether you're serving 10 or 10,000.

## The Cart

Unlike any other storage and transport cart, Strata's design uniquely eliminates lost pieces while protecting your wares for superior in-service life.

## Reasons to Love

- Fashion-forward style
- Operational durability
- Advanced safety features
- Facilitates nearly any kind of cooking and display
- Designed for indoor or outdoor use
- Lightweight
- Well-priced



# Chafing Kits With Clamshell Inserts

The silverscreen of buffet presentations



Clear lids put the spotlight on your food, and with guest-pleasing style and advanced safety features for canned fuel, you can expect a standing ovation every time.





ST11602114K

Rectangular Chafing Dish Kit

**Includes:** Clamshell Insert with Glass Lid, Deck Unit with Protective Case, and Rectangular Base Unit with Protective Case



ST11602118K

Round Chafing Dish Kit

**Includes:** Round Clamshell Insert with Glass Lid, Square Deck Unit with Protective Case, Square Base Unit with Protective Case, and Round Food Pan



ST11602114

Rectangular/Oblong Clamshell Insert with Glass Lid

23-1/4"L x 16-1/2"W x 7-5/8"H



ST11602112

Rectangular System Deck Unit with Protective Case

24-1/2"L x 16-1/2"W x 5-1/4"H



ST11602111

Rectangular Base Unit with Protective Case

24-1/2"L x 16-1/2"W x 5-1/4"H



ST11602118

Round Clamshell Insert with Glass Lid

4 qt. 16-1/2"Dia. x 6-3/8"H



ST11602116

Square Deck Unit with Protective Case

16-1/2"L x 16-1/2"W x 5-1/4"H



ST11602115

Square Base Unit with Protective Case

16-1/2"L x 16-1/2"W x 5-1/4"H



ST11610000

Round Food Pan

2-1/2" deep, 13-9/10 dia.

## Advanced safety features

Prevent canned fuel from sliding or spilling

## Even heating

Provided by preset inserts for canned fuel

## Steady, managed airflow

Keeps flames lit without blowing out

## Fresh and crisp

Designed to channel water and condensation away from food

# Griddle Kits

Fashionable finishing, toasting and warming



Fashionable griddle station features even heating, half-size tray options and a built-in food refuse slot for tidy stations.



**ST11702011K**

Rectangular Griddle Kit

**Includes:**

Grill Top

Base Unit with Protective Case

Square Serving Tray

Drip Tray



**ST11702011**

Rectangular Griddle Top with Drip Tray

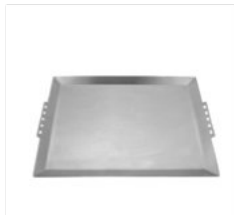
23-1/2"L x 15-1/2"W x 3/4"H



**ST11602111**

Rectangular Base Unit with Protective Case

24-1/2"L x 16-1/2"W x 5-1/4"H



**ST11712015**

Rectangular Half Tray

15.5L x 11.75"W x 0.5"H

## Even Heating

With stainless steel top and aluminum bottom

## Rapid Service

Prep par-cooked food and store on a bun pan rack for quick rotation during service

## Half the Weight

Of standard wares supports an energetic and healthy staff



# Sauté Kits for Butane Heat

Sauté in safety and style



The sleek and sexy Strata sauté kit creates beautiful presentations for cooking, searing, toasting, a saucier station and more.





**ST11602129**

Rectangular Double Sauté/Cooker With Two Butane Stoves

**Includes:** Base unit, 2 top grates, 2 butane stoves, and protective case



**ST11602130**

Square Single Sauté/Cooker With Butane Stove

**Includes:** Base unit, 1 top grate, 1 butane stove, and protective case



**ST11702009**

Replacement Top with (2) Grates for Double Butane Saute/Cooker

23-1/2"L x 15-1/2"W x 3/4"H



**ST11702010**

Replacement Top with (1) Grate for Single Butane Saute/Cooker

15-1/2"L x 15-1/2"W x 3/4"H

## Customer splash zone

Helps contain spills to the work station, keeping guests clean

## Open grate burners

for rapid, even heating

## Advanced safety feature

automatically switches off butane burners when removed

# Sauté Kits for Canned Fuel

Sauté in safety and style



Striking sauté kits for canned fuel are ideal for sizzling, sauce thickening, warming, toasting and more. Advanced safety features for canned fuel prevent them from moving around during service.





**ST11702012K**

Double Rectangular Sauté/Cooker Kit

**Includes:** Saute top, 2 grates, base unit, and protective case



**ST11702014K**

Square Sauté/Cooker Kit

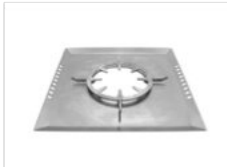
**Includes:** Saute top, 1 grate, base unit, and protective case



**ST11702012**

Rectangular Double Sauté/Cooker Top

23-1/2"L x 15-1/2"W x 3/4"H



**ST11702014**

Square Single Sauté/Cooker Top

15-1/2"L x 15-1/2"W x 3/4"H



**ST11602111**

Rectangular Base Unit with Protective Case

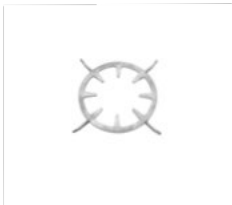
24-1/2"L x 16-1/2"W x 5-1/4"H



**ST11602115**

Square Base Unit with Protective Case

16-1/2"L x 16-1/2"W x 5-1/4"H



**ST11702017**

Replacement Sauté/Cooker Grate

11" x 11"

## Advanced safety features

prevent canned fuel from sliding or spilling

## Open-grate burner

for excellent access to the heat source

## Steady, managed airflow

keeps flames lit without blowing out

## Half the weight

of standard wares supports an energetic and healthy staff

# Warming Kits

Expert design, expert warming



Strata warming kits feature expertly designed burners, directing flame to the perimeter of sauce pans for professionally warming soups, sauces, broths, gravy ...you name it!





**ST11702013K**

Rectangular Double Warmer Kit

**Includes:** 1warmer top, base unit, 2 warmer grates, and protective case



**ST11702015K**

Square Single Warmer Kit

**Includes:** 1warmer top, base unit, 1warmer grates, and protective case



**ST11702013**

Rectangular Double Warmer Top

23-1/2"L x 15-1/2"W x 3/4"H



**ST11702015**

Description

Dimensions



**ST11602111**

Rectangular Base Unit with Protective Case

24-1/2"L x 16-1/2"W x 5-1/4"H



**ST11602115**

Square Base Unit with Protective Case

16-1/2"L x 16-1/2"W x 5-1/4"H



**ST11702016**

Replacement Warming Grate

11" x 11"

## Advanced safety features

prevent canned fuel from sliding or spilling

## Delicate warming heat

from burners directing flame to the perimeters of pans

## Steady, managed airflow

keeps flames lit without blowing out

## Half the weight

of standard wares supports an energetic and healthy staff

# Carving Station

Superior sanitary service for the most popular buffet destination



Strata's clever carving kit features renewable Corian boards for superior sanitary service. Simply sand down knife marks to eliminate microscopic valleys where bacteria can hide.





**ST11201111K**

Rectangular Carving Station Kit polyethylene

**Includes:** carving tray, base unit, and protective case



**ST11201112K**

Square Carving Station Kit polyethylene

**Includes:** carving tray, base unit, and protective case



**ST11201111**

Rectangular Carving/Display Tray polyethylene

23-1/2"L x 13-1/2"W x 1/2"H



**ST11201112**

Round Carving/Display Tray polyethylene

15-3/4" Dia. x 1/2"H



**ST11209111K**

Rectangular Carving Station Kit Corian

**Includes:** carving tray, base unit, and protective case



**ST11209112K**

Square Carving Station Kit Corian

**Includes:** carving tray, base unit, and protective case



**ST11209111**

Rectangular Carving/Display Tray Corian

23-1/2"L x 13-1/2"W x 1/2"H



**ST11209112**

Round Carving/Display Tray Corian

15-3/4" Dia. x 1/2"H

## Tidy stations

built-in food refuse slots keep work station clean during service and double as handles during transport

## Half the weight

of standard wares supports an energetic and healthy staff

## Food safety and easy management

Ensure sanitary service by easily sanding down knife marks to remove areas where bacteria can grow and save money on costly replacement boards

# Chilling Kits

Sleek and cool ...literally!



This stealth chiller keeps your cold food cold in style. Use the Strata chilling kit to display all manner of desserts, crudités, fruit cups, salads and more.



**ST11712014K**

Rectangular Serving TrayKit

**Includes:** serving tray, base unit, and protective case



**ST11712016K**

Square Serving TrayKit

**Includes:** serving tray, base unit, and protective case



**ST11712014**

Rectangular Serving Tray

23.5" x 15.5"



**ST11712016**

Square Serving Tray

15.5" x 15.5"



**ST11602112**

Rectangular System Deck Unit with Protective Case

24-1/2"L x 16-1/2"W x 5-1/4"H



**ST11602116**

Square Deck Unit with Protective Case

16-1/2"L x 16-1/2"W x 5-1/4"H

## Several ways to chill

Ice, dry ice or a chilling pad

## Versatile

Ideal for cold or room-temp displays

## Rapid service

Prep cold food and store on a bun pan rack for quick rotation during service

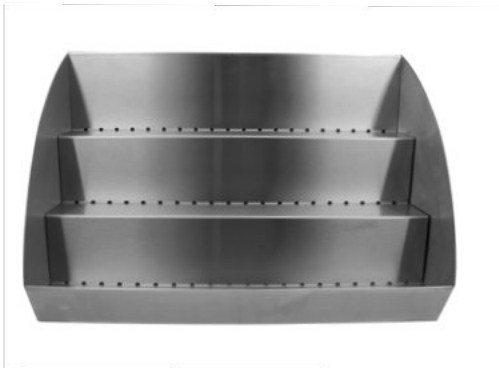


# Beverage Service

Good to the last drop



Brilliantly designed tilted rows with small holes at the back allow condensation to drain away while keeping the cold air flowing from the ice tray deck below. For a single-tier display, just use the deck and an ice-filled food pan as a beverage tub!



ST11722001K

Beverage Station Kit

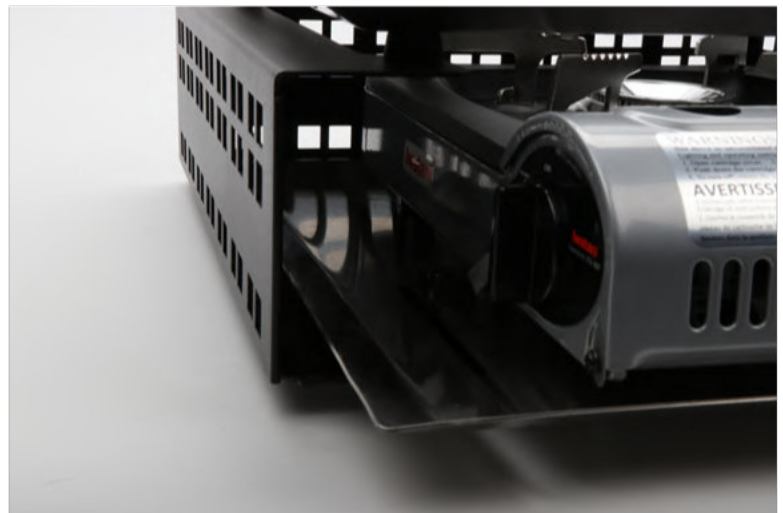
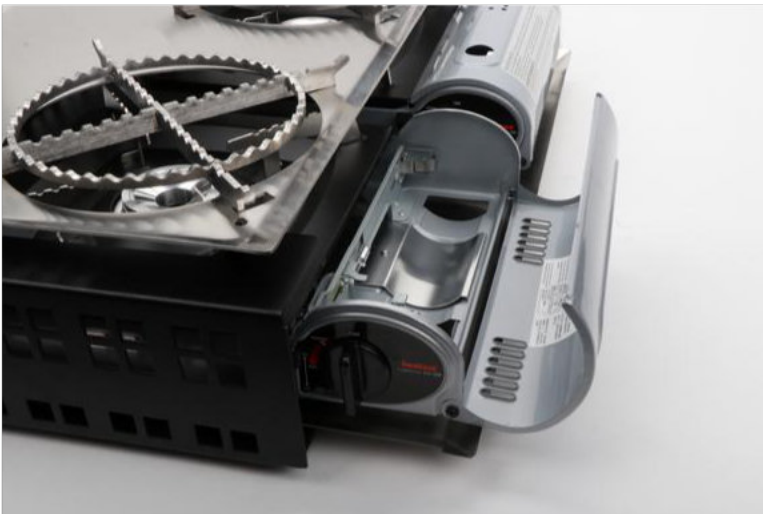
**Includes:** stainless Steel Beverage Station top, steel deck unit, and protective transport case



# Care and Maintenance

Properly caring for your G.E.T.products rewards you with the best possible in-service life, keeping your replacement costs as low as possible.

- Wipe with warm bleach-free soapy water and a soft cloth to clean
- Store in protective Strata cases after use and during transit
- Can be used with canned fuel, butane heat sources and placed under heat lamps
- Built for indoor and outdoor use
- Do not put in dishwasher
- Not microwave safe
- Do not use scour pads or steel wool to clean as they will scratch the product
- Do not use bleach to clean
- Do not apply sharp objects directly to Strata metal pieces as they can scratch the product





# Storage and Transport Cart

Protect your wares and never lose another piece again!



Unlike any other cart, the Strata storage and transport cart uniquely eliminates lost pieces while protecting your wares for superior in-service life.



ST11102001

Stack & Storage Cart

30" x 22" x 25.5"

### Rapid Setup

organize carts by table for large parties and quickly unpack once onsite

### Rock Solid

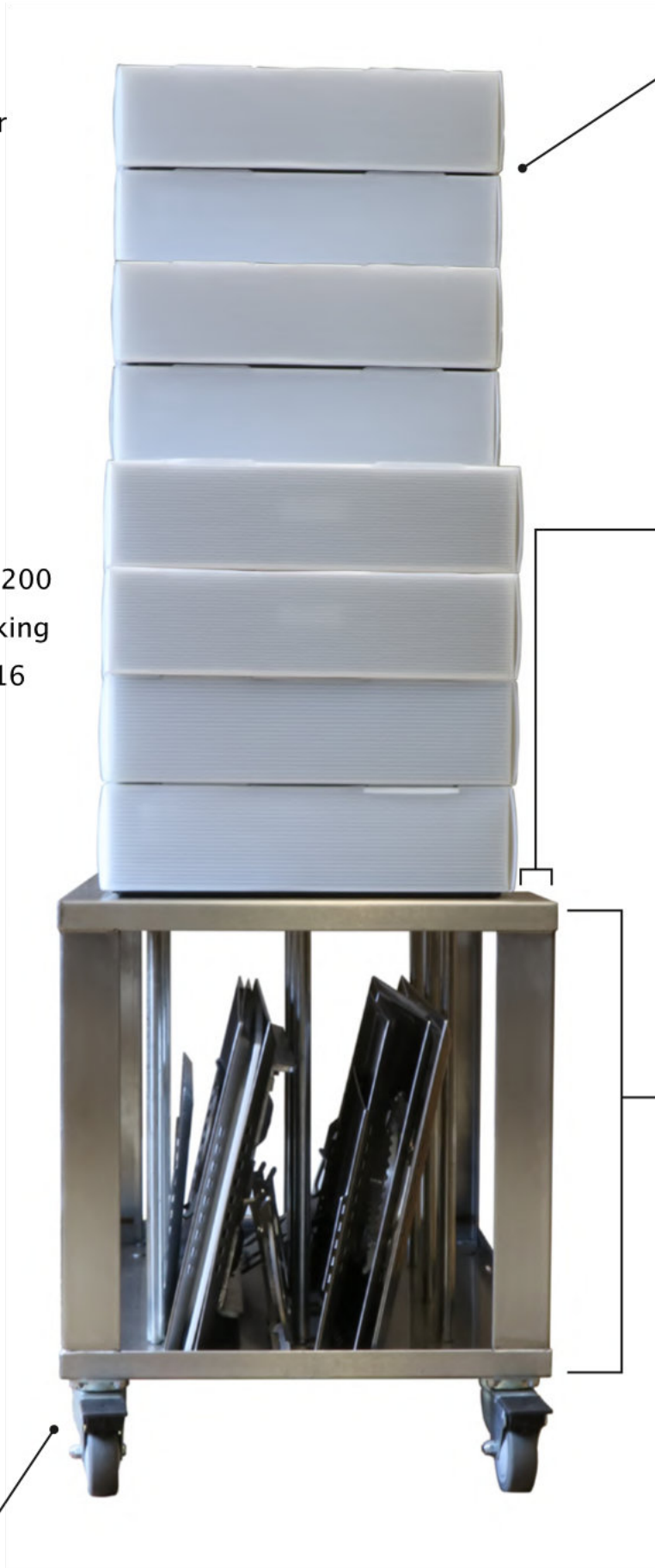
Approved for loads up to 200 lbs and has an 8 unit stacking height (equal to roughly 16 feet of banquet space)

### Damage Control

special coating on the bottom half prevents scratching of your wares

### Locking Casters

stabilize cart on demand



### Unshakable Transport

Storage boxes lock in place, preventing shifting and falling

### Secure Perimeter

An extra inch of space protects your wares from damage during transport

### Small Footprint

easily store under banquet tables or in small closets

### Easy cleaning

Use slots on bottom board to wipe or spray crumbs away

# Reference



**ST11602114K**  
Rectangular Chafing Dish Kit



**ST11602118K**  
Round Chafing Dish Kit



**ST11702011K**  
Rectangular Grill Kit



**ST11602129**  
Rectangular Double Sauté/Cooker With Two Butane Stoves



**ST11702012K**  
Double Rectangular Sauté/Cooker Kit



**ST11702013K**  
Rectangular Double Warmer Kit



**ST11712014K**  
Rectangular Serving Tray Kit



**ST11602130**  
Square Single Sauté/Cooker With Butane Stove



**ST11702014K**  
Square Sauté/Cooker Kit



**ST11702015K**  
Description



**ST11712016K**  
Square Serving Tray Kit



**ST11201111K**  
Rectangular Carving Station Kit polyethylene



**ST11201112K**  
Square Carving Station Kit polyethylene



**ST11722001K**  
Beverage Station Kit



**Designed  
To Serve**



Represented in Western Canada by:  
**BJE Hospitality Solutions**

**STRATA**  
BUFFETWARE

**How to Buy:** <https://get-melamine.com/how-to-buy>



Item Number: STRATABROCHURE2020